



Languages included:
English, Español
& Français

Legend of the Dragon TM and © 2004 BKN International AG



Ang vs. his guardian mode; The Golden Dragon

Key features:

- All 24 characters are playable in this "beat-em-up" adventure game!
- Players can move around freely in the outside universe or in one of the places of combats.
- All the important places from the cartoon series are present in the game as combat arenas such as The 12 sacred temples, The Dragon Dojo, The Zodiac Master's hideout, The Temple of Shadow Dragon, The Great Wall of China and Hong Kong Bay.
- 8 different game modes ensure hours of challenging game play: Play Quest mode, Arcade mode, Training mode, Survival mode, Time Attack mode, versus mode, Team Battle mode, Tag mode.
- Three of the modes are multiplayer.
- Fantastic 3D animations are true to the graphic style of the TV series.

Legend of the Dragon

Description

Join the battle to maintain the universal balance between darkness and light with all the popular characters from the animated TV series: Ang Lueng never dreamed that he would be the next Golden Dragon. He always assumed his twin sister, Ling, the best fighter of the Dragon Dojo run by their mentor Master Chin, was next in line. Ling is deeply humiliated. She swears to take vengeance upon those who betrayed her, starting with her brother and Master Chin. The lure of power from the Zodiac Master proves too much for Ling. Her hatred leads her into darkness and she becomes the Shadow Dragon...

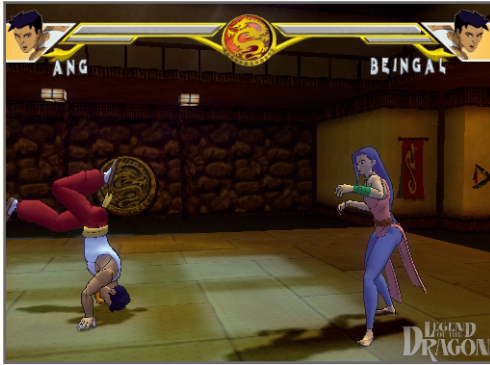
Enjoy the magic tale of the Legend of the Dragon in this combat action/adventure game that combines the thrilling fighting sequences and compelling story line of the TV series - all wrapped up in outstanding game play and animation!



SPECIFICATIONS	
Format	PlayStation2
Genre	Action
ESRB Age Rating	RP
Release	Q4 2006
UPC code	8-55433-00112-0



The Game Factory Inc.
1337 3rd St. Promenade, Suite 301 Santa Monica CA 90401
Tel: 310 393 7931 Fax: 310 899 3741
www.gamefactorygames.com



Ang showing off!



Ang receives lessons from Pig Guardian



Master Chin's dojo



Fight in out door environment

Brand overview

ANG and LING, brother and sister, twins born in the year of the Dragon, with a unique destiny. Ang is attracted by the light, Ling by darkness... The Twelve Signs of the Ancient Chinese Zodiac, each has its own temple, each temple has it's own guardian. The guardians undergo a physical change when they are forced to defend their temple, a metamorphosis that reflects the skills and likeness of the zodiac creature they represent. If one could actually attain these twelve astonishing ancient powers they would become virtually unstoppable. Which is precisely what the ZODIAC MASTER has been attempting to do. Only one thing stood in his way – THE GOLDEN DRAGON!

- The series will premiere in Fall 2006 in the Jetix Action/Adventure block on both Toon Disney and ABC Family Channel
- Series created and Produced by Richard Ungar (X-Men and Spider-Man TV series)
- Committed to 39 episodes
- Grand Toys launching action figure toy line in October 2006

Legend of the Dragon TM and © 2004 BKN International AG
 "PlayStation" and the "PS" Family logo are registered trademarks of Sony Computer Entertainment Inc.
 The ratings icon is a trademark of the Entertainment Software Association.
 This title has not yet been concept approved by Sony Computer Entertainment America



The Game Factory Inc.
 1337 3rd St. Promenade, Suite 301 Santa Monica CA 90401
 Tel: 310 393 7931 Fax: 310 899 3741
 www.gamefactorygames.com

